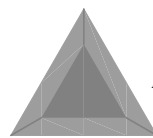


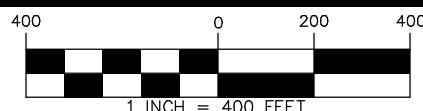


MATTHEW S. JOHNSON, P.L.S.
 GEORGIA REGISTRATION NO. 2868
 261 COUNTY LINE ROAD
 OGLETHORPE, GA 31068
 (229) 942-5923



TRINITY LAND SURVEYING
 BOUNDARY - SUBDIVISION - ALTA/ACSM - TOPOGRAPHIC

RETRACEMENT SURVEY
 CROWELL PROPERTIES LLC
 LOCATED IN LAND LOTS 185, 192 & 193
 14th LAND DISTRICT
 TAYLOR COUNTY, GEORGIA
 JUNE 20, 2017



THIS BLOCK RESERVED FOR THE CLERK OF SUPERIOR COURT

**SURVEYOR'S CERTIFICATION (i)
 JURISDICTIONAL APPROVAL**

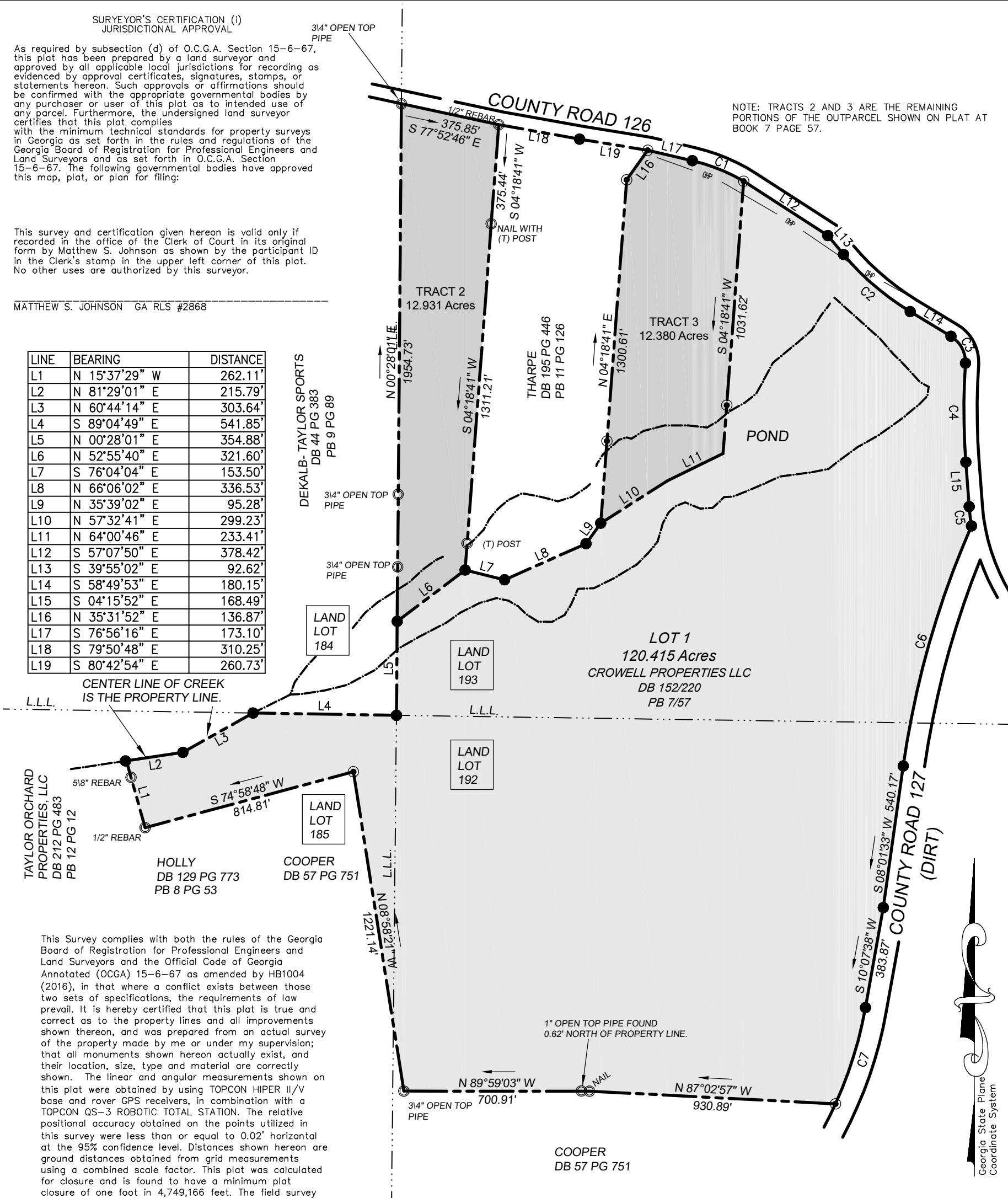
As required by subsection (d) of O.C.G.A. Section 15-6-67, this plat has been prepared by a land surveyor and approved by all applicable local jurisdictions for recording as evidenced by approval certificates, signatures, stamps, or statements hereon. Such approvals or affirmations should be confirmed with the appropriate governmental bodies by any purchaser or user of this plat as to intended use of any parcel. Furthermore, the undersigned land surveyor certifies that this plat complies with the minimum technical standards for property surveys in Georgia as set forth in the rules and regulations of the Georgia Board of Registration for Professional Engineers and Land Surveyors and as set forth in O.C.G.A. Section 15-6-67. The following governmental bodies have approved this map, plat, or plan for filing:

This survey and certification given hereon is valid only if recorded in the office of the Clerk of Court in its original form by Matthew S. Johnson as shown by the participant ID in the Clerk's stamp in the upper left corner of this plat. No other uses are authorized by this surveyor.

MATTHEW S. JOHNSON GA RLS #2868

| LINE | BEARING | DISTANCE |
|------|---------------|----------|
| L1 | N 15°37'29" W | 262.11' |
| L2 | N 81°29'01" E | 215.79' |
| L3 | N 60°44'14" E | 303.64' |
| L4 | S 89°04'49" E | 541.85' |
| L5 | N 00°28'01" E | 354.88' |
| L6 | N 52°55'40" E | 321.60' |
| L7 | S 76°04'04" E | 153.50' |
| L8 | N 66°06'02" E | 336.53' |
| L9 | N 35°39'02" E | 95.28' |
| L10 | N 57°32'41" E | 299.23' |
| L11 | N 64°00'46" E | 233.41' |
| L12 | S 57°07'50" E | 378.42' |
| L13 | S 39°55'02" E | 92.62' |
| L14 | S 58°49'53" E | 180.15' |
| L15 | S 04°15'52" E | 168.49' |
| L16 | N 35°31'52" E | 136.87' |
| L17 | S 76°56'16" E | 173.10' |
| L18 | S 79°50'48" E | 310.25' |
| L19 | S 80°42'54" E | 260.73' |

NOTE: TRACTS 2 AND 3 ARE THE REMAINING PORTIONS OF THE OUTPARCEL SHOWN ON PLAT AT BOOK 7 PAGE 57.



This Survey complies with both the rules of the Georgia Board of Registration for Professional Engineers and Land Surveyors and the Official Code of Georgia Annotated (OCGA) 15-6-67 as amended by HB1004 (2016), in that where a conflict exists between those two sets of specifications, the requirements of law prevail. It is hereby certified that this plat is true and correct as to the property lines and all improvements shown thereon, and was prepared from an actual survey of the property made by me or under my supervision; that all monuments shown hereon actually exist, and their location, size, type and material are correctly shown. The linear and angular measurements shown on this plat were obtained by using TOPCON HIPER II/V base and rover GPS receivers, in combination with a TOPCON QS-3 ROBOTIC TOTAL STATION. The relative positional accuracy obtained on the points utilized in this survey were less than or equal to 0.02' horizontal at the 95% confidence level. Distances shown hereon are ground distances obtained from grid measurements using a combined scale factor. This plat was calculated for closure and is found to have a minimum plat closure of one foot in 4,749,166 feet. The field survey was completed on 6/20/2017.

| CURVE | RADIUS | ARC LENGTH | CHORD LENGTH | CHORD BEARING |
|-------|----------|------------|--------------|---------------|
| C1 | 698.13' | 209.67' | 208.88' | S 68°10'58" E |
| C2 | 1009.41' | 333.22' | 331.71' | S 49°22'27" E |
| C3 | 113.69' | 120.88' | 115.26' | S 28°22'19" E |
| C4 | 2651.24' | 374.04' | 373.73' | S 00°13'22" E |
| C5 | 799.30' | 73.60' | 73.57' | S 06°54'08" E |
| C6 | 3449.43' | 945.33' | 942.38' | S 15°52'37" W |
| C7 | 1525.75' | 381.50' | 380.51' | S 17°17'25" W |

- LEGEND**
- 1/2" REBAR SET
 - x — FENCE
 - IRON PIN FOUND
 - CONCRETE MONUMENT